

Steps for installing Matlab in Linux

1. Open terminal and type the following commands without "#"

```
# mkdir /matlab
```

```
# mkdir -p /tmp/matlab
```

```
#mkdir -p /tmp/diskimage
```

```
# mount -t nfs 172.16.10.22:/matlab /matlab
```

check the mount points with the command "df -h"

2. Go to the directory /matlab/matlab2015a/linux

```
# cp -pR /matlab/matlab2015a/linux /tmp/matlab
```

```
# cd /tmp/matlab/linux
```

Note : Copy the "license.dat" and "key.txt" files also.

3. Mount the disk image

```
# mount -o loop MATHWORKS_R2015A_Linux.iso /tmp/diskimage
```

check the mount points with the command "df -h" and go the directory

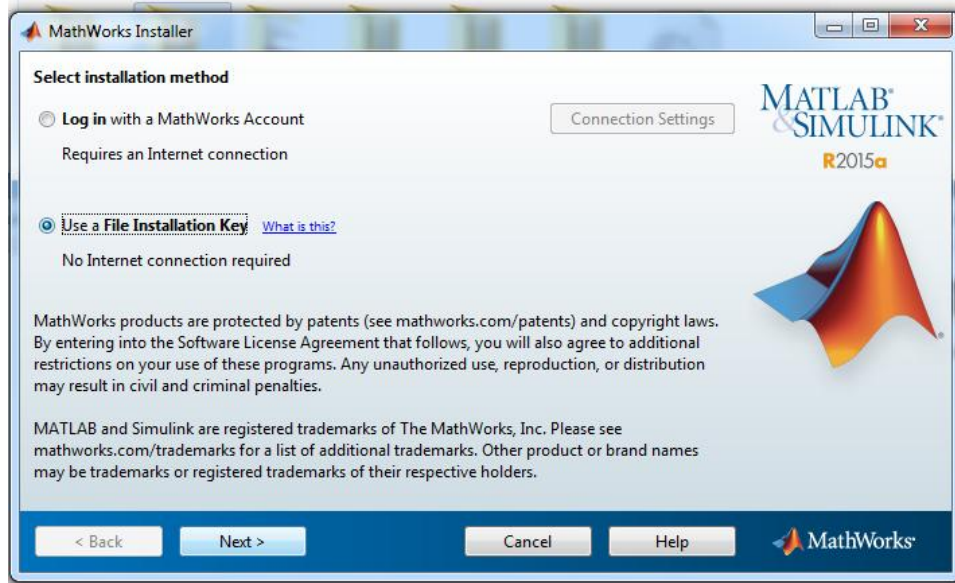
```
# cd /tmp/diskimage
```

```
# sh install
```

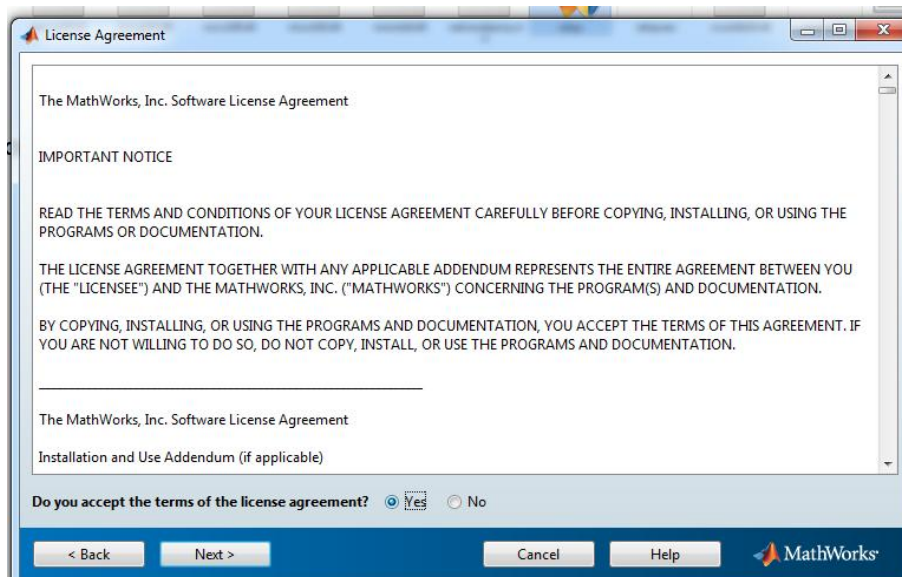
Note:

- Installing directly from network drive will cause error in installation. Installation should be done from the locally copied installation source only.
- Please unmount the NFS filesystem immediately after copying the installation source files.

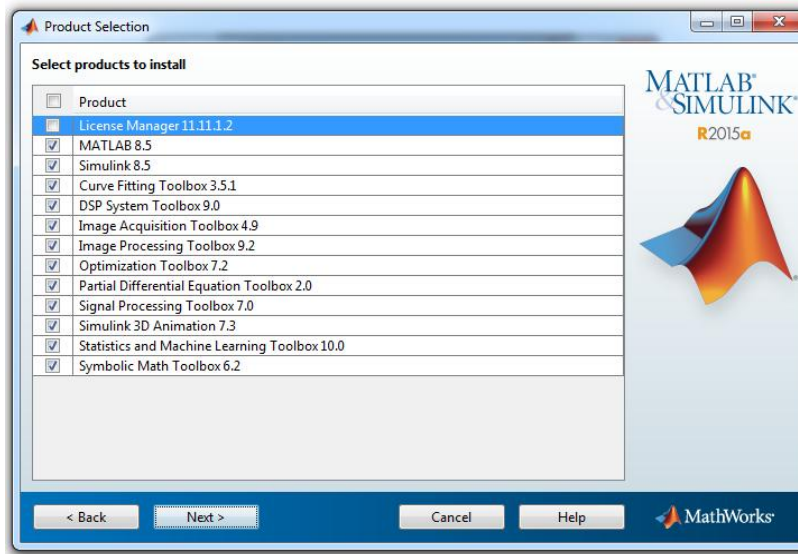
4. Click "Use a File Installation Key" and click "next"



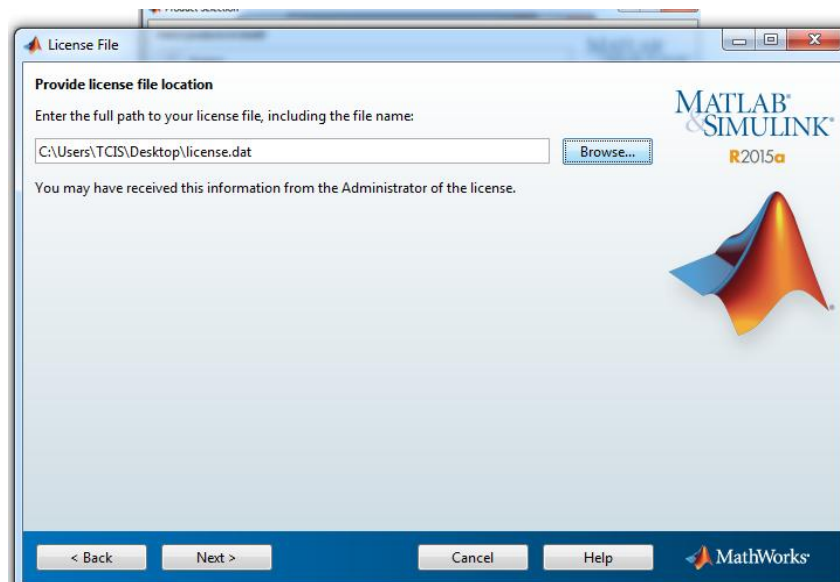
5. Click "yes" and click "Next"



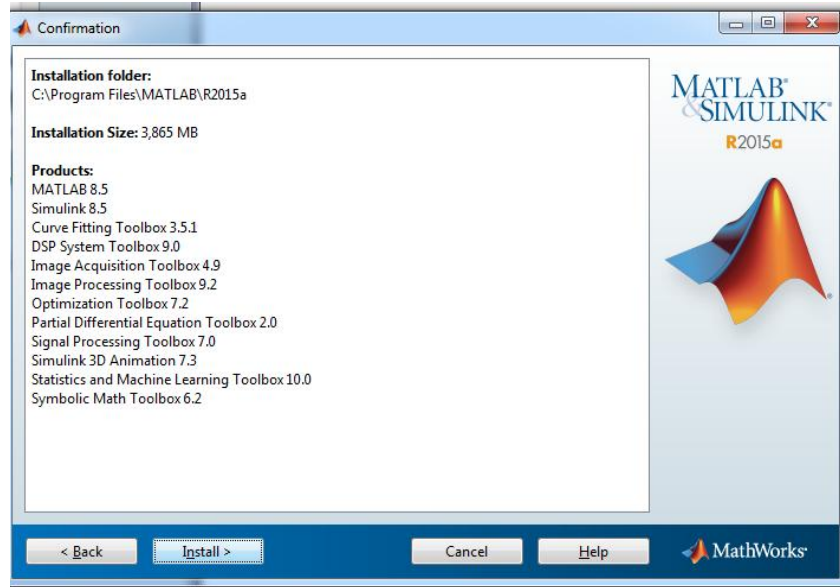
6. Copy the key from "key.txt" and paste it in the Text box



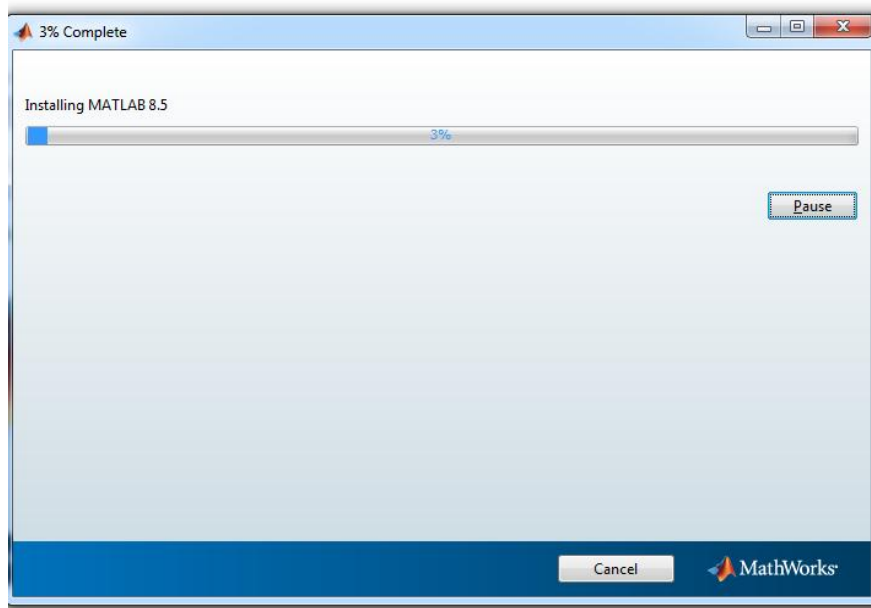
9. Specify the path of downloaded "license.dat" file and click "Next"



10. Click "Next" and Click "Install"



11. Your Installation will begin



12. After the installation is complete. Click "Finish"

