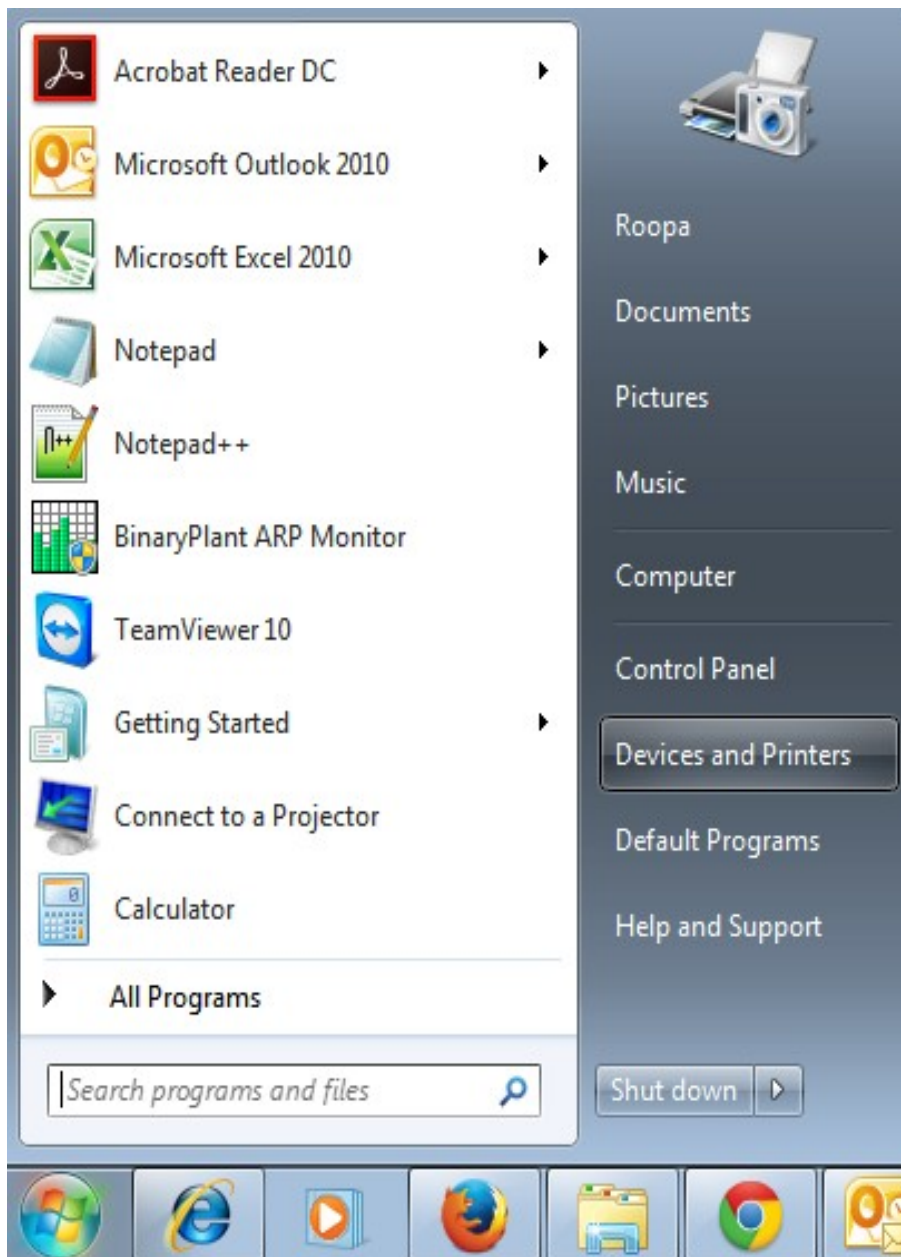
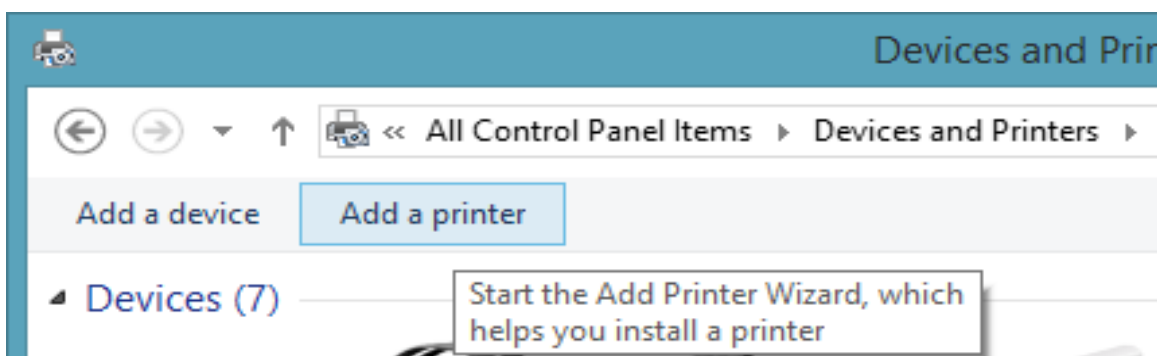


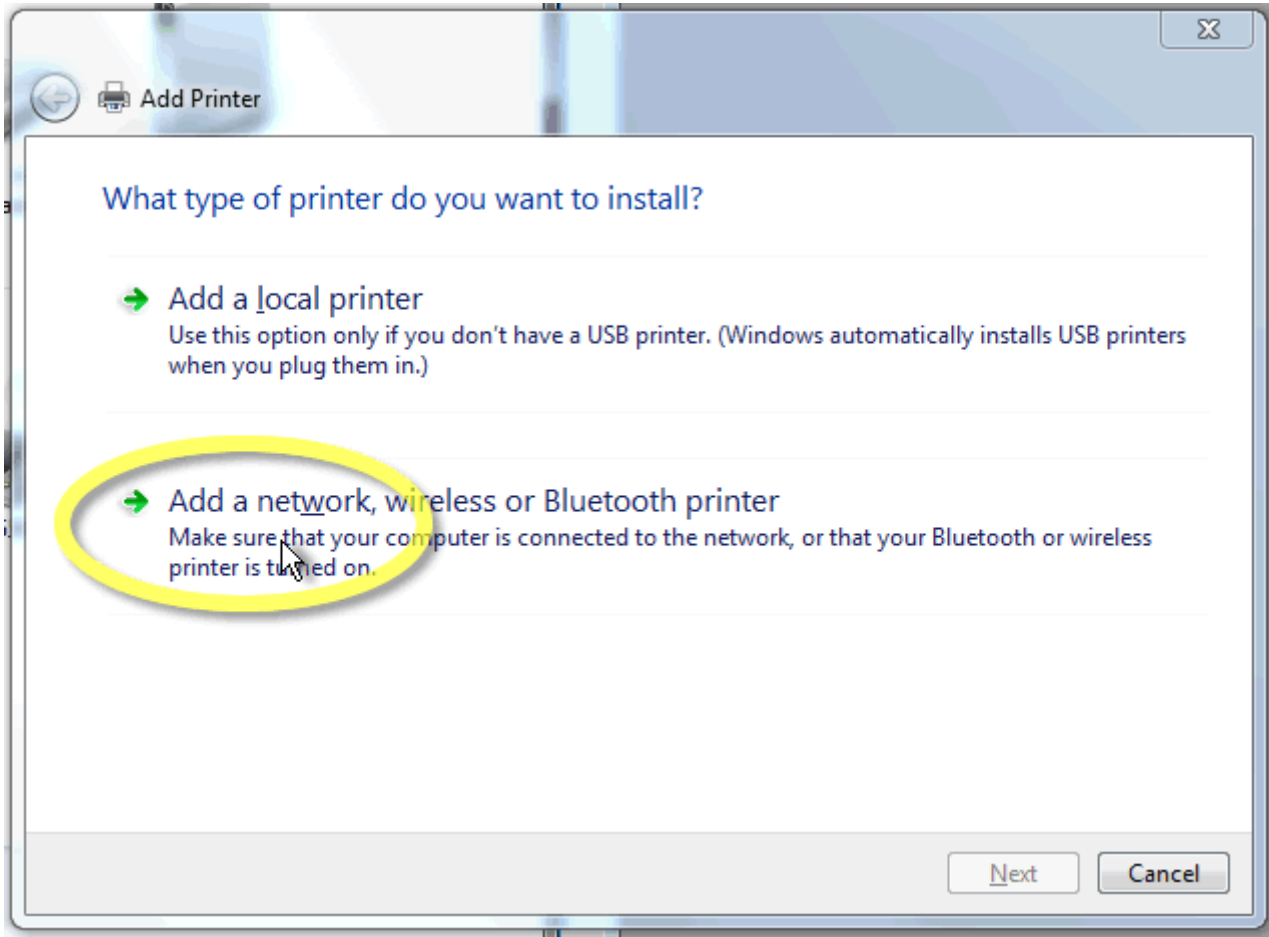
Choose Start → Devices and Printers.



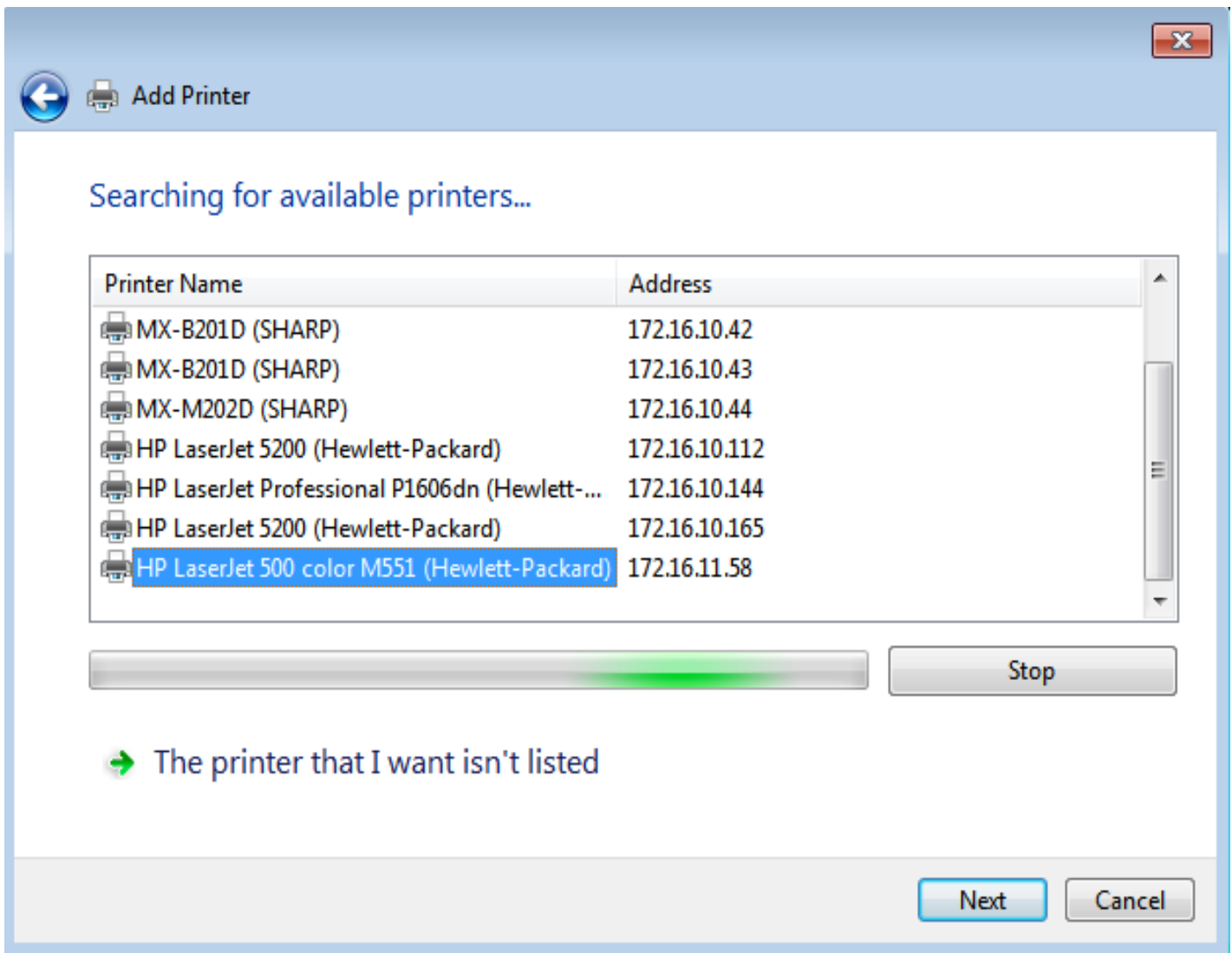
At the top, click the Add a Printer button.



Click the Add a Network, Wireless, or Bluetooth Printer paragraph.



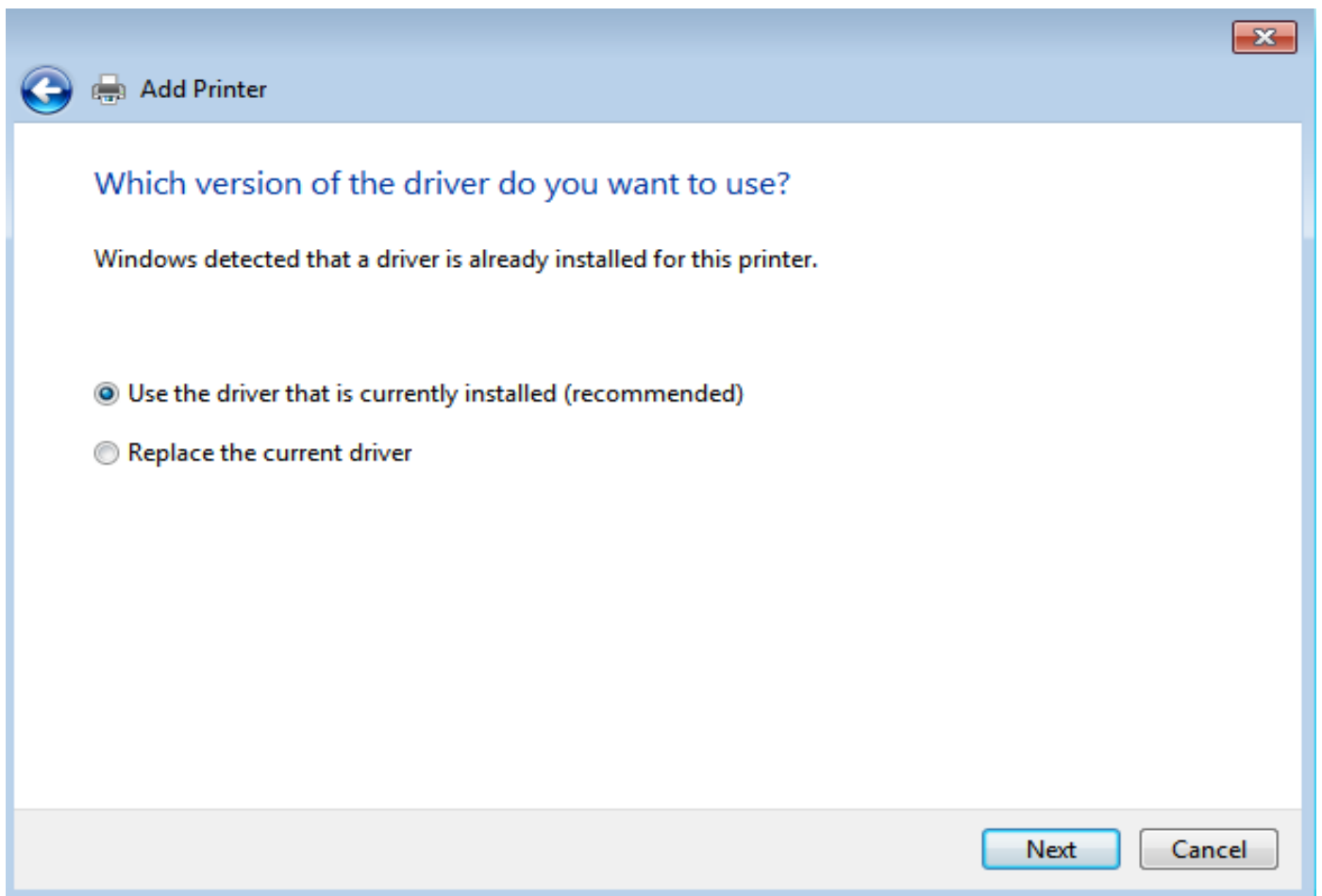
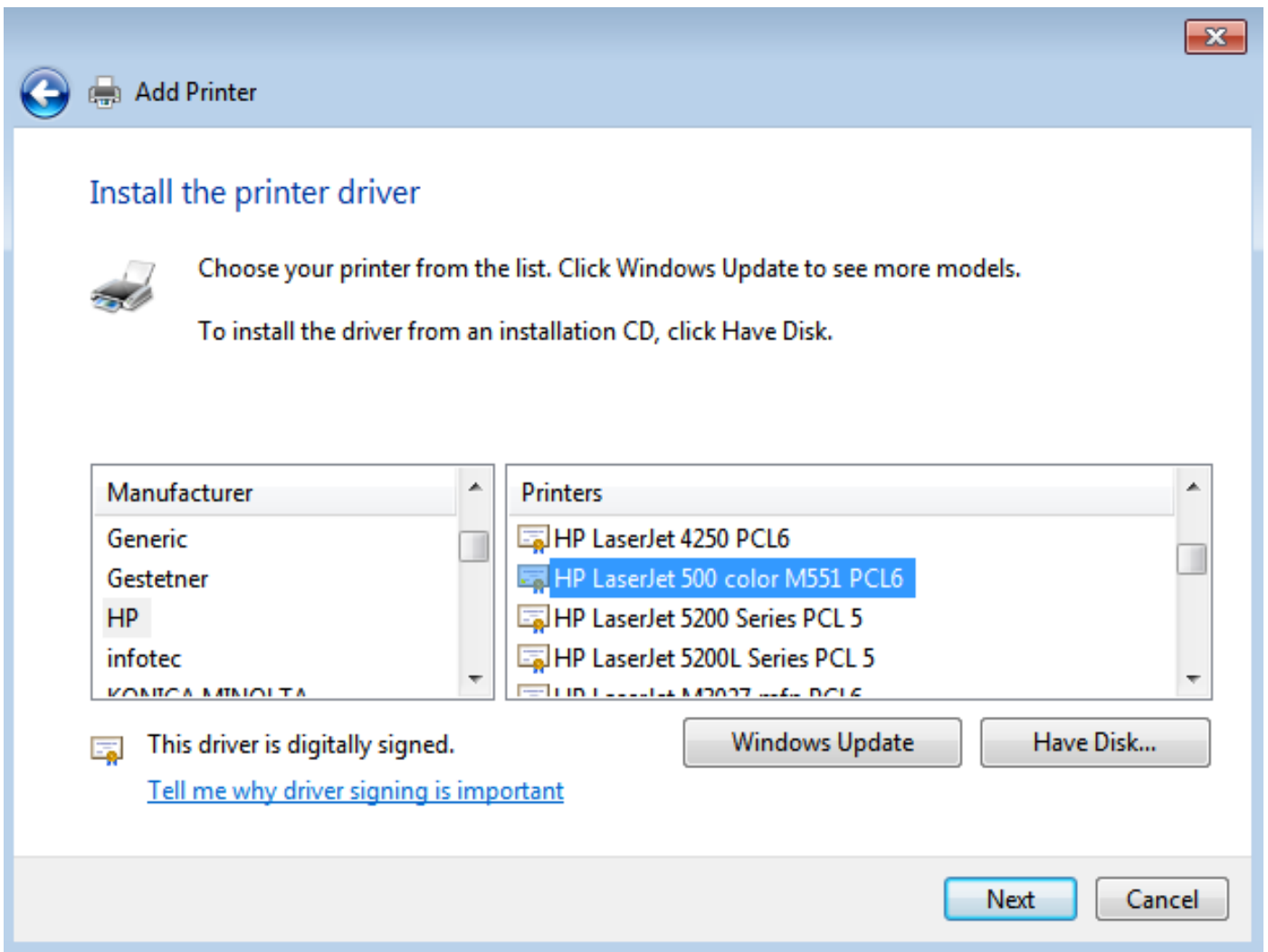
If you see your printer in the list, Select the appropriate printer and go to the next step



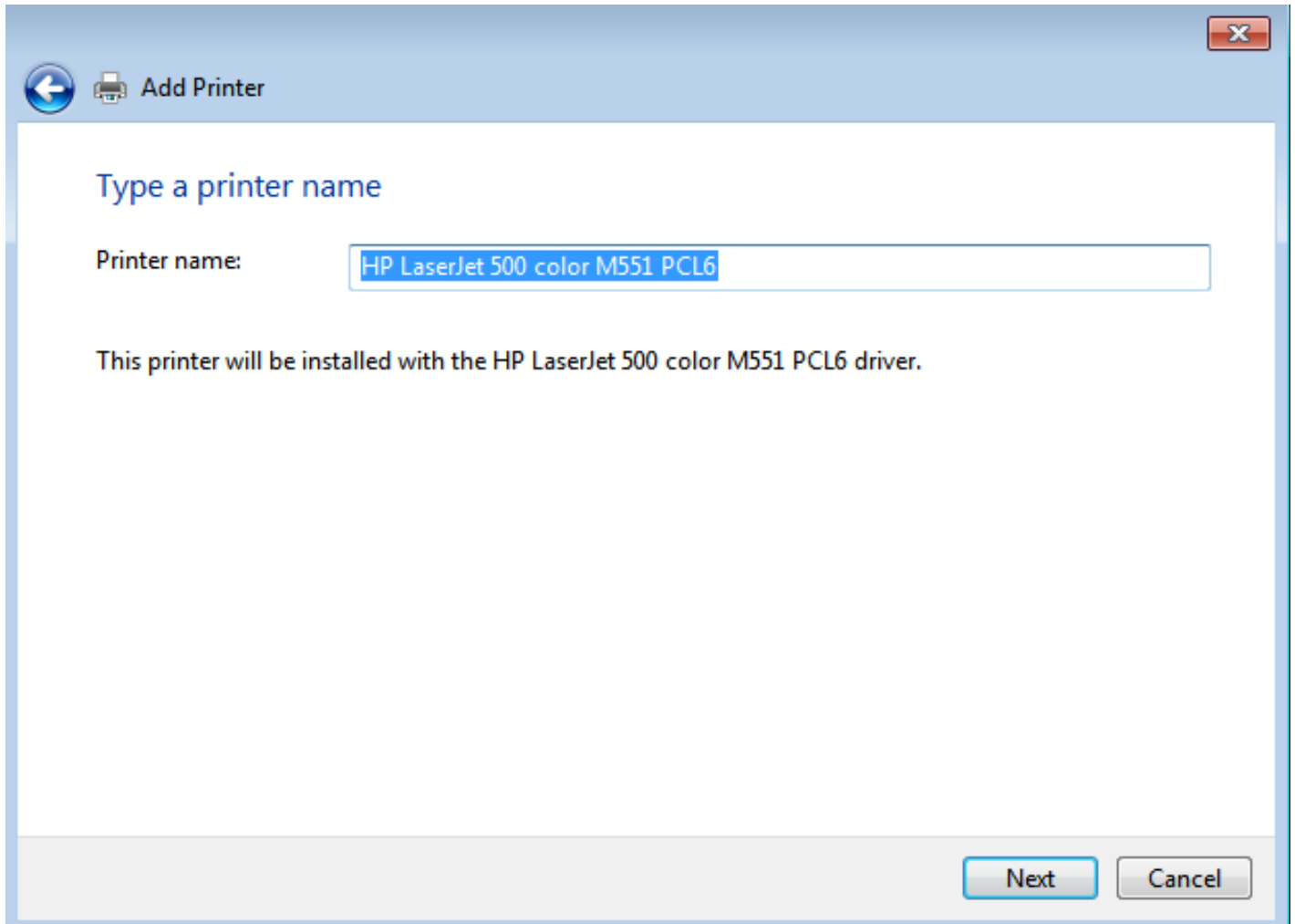
Install the necessary drivers if prompted. Windows should be able to find and install the correct drivers for most printers.

For HP LaserJet Enterprise 500 color Printer M551dn, Here is the link to download:

<http://h20565.www2.hp.com/hpsc/swd/public/readIndex?sp4ts.oid=4184891&lang=en&cc=us>



Here, you can write any name of the printer you want:



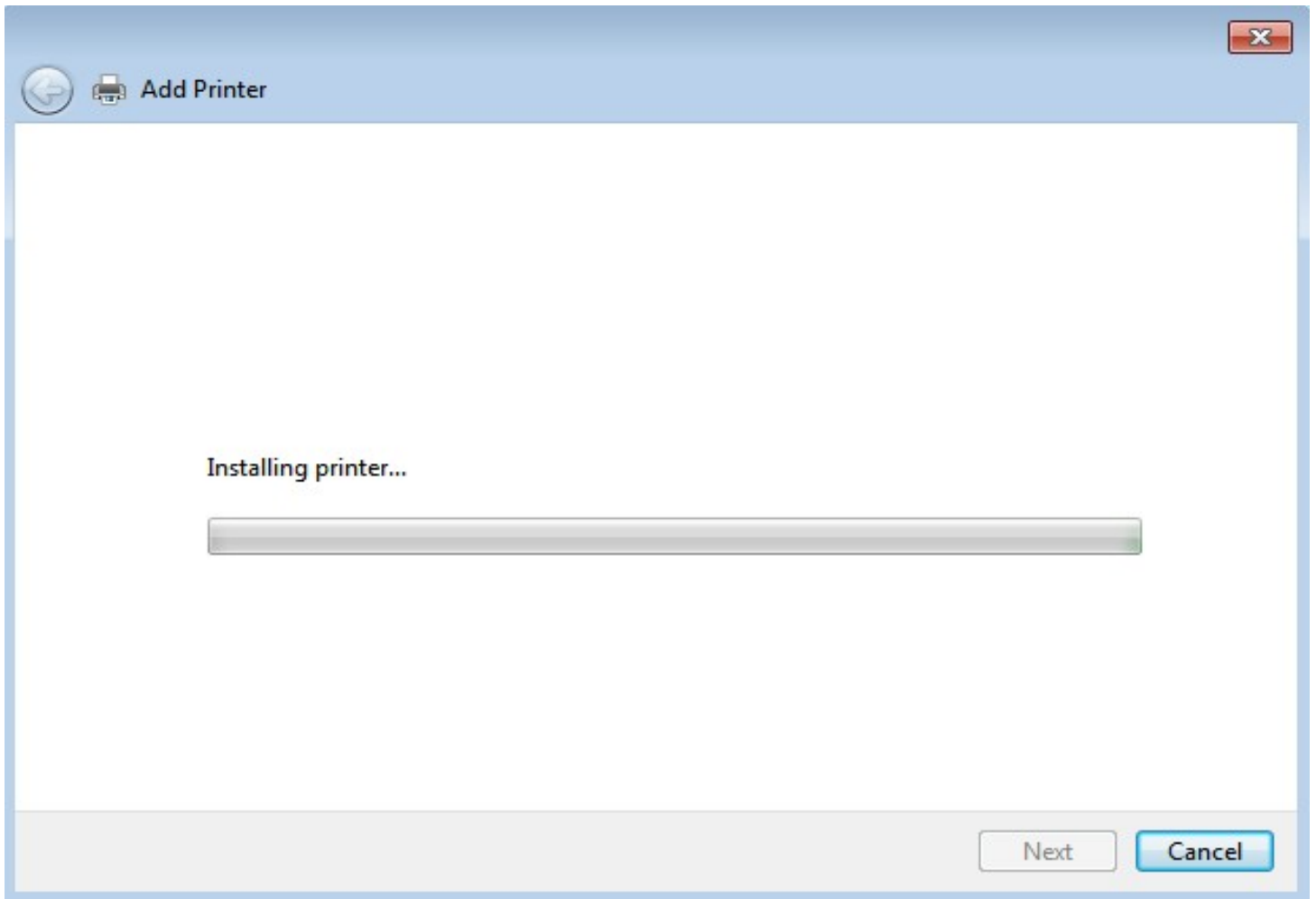
← Add Printer

Type a printer name

Printer name:

This printer will be installed with the HP LaserJet 500 color M551 PCL6 driver.

Next Cancel



Select Do not share this printer

Add Printer

Printer Sharing

If you want to share this printer, you must provide a share name. You can use the suggested name or type a new one. The share name will be visible to other network users.

Do not share this printer

Share this printer so that others on your network can find and use it

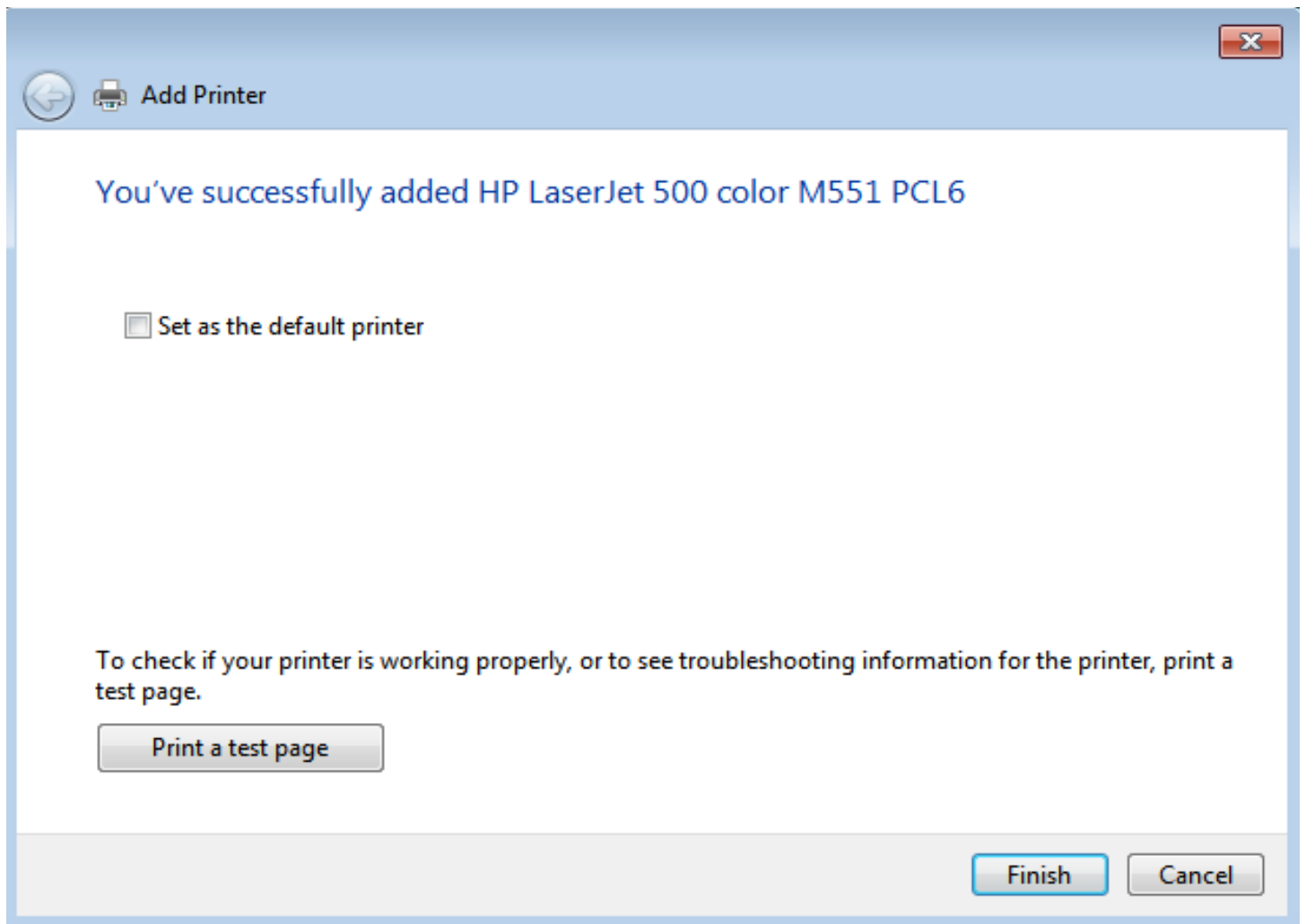
Share name:

Location:

Comment:

Next **Cancel**

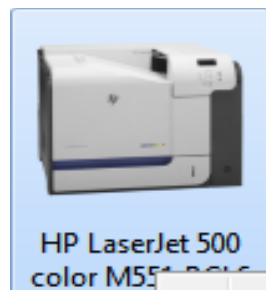
And you can make it a default printer in your system:



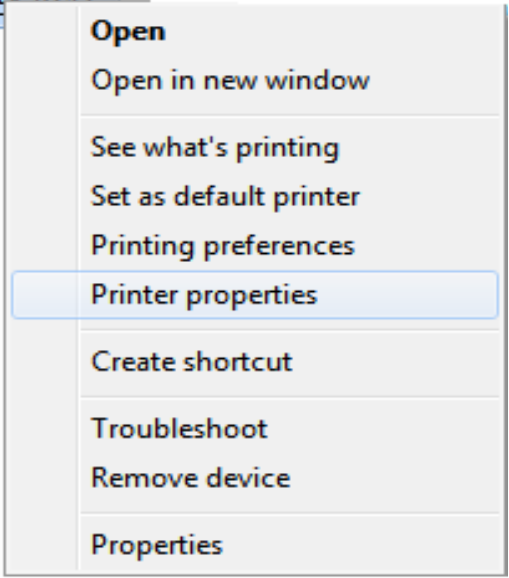
With this, you have successfully added the network printer to your Windows.

If you want to use the **automatic duplex printing**, you need to **adjust** some **settings** of the printer.

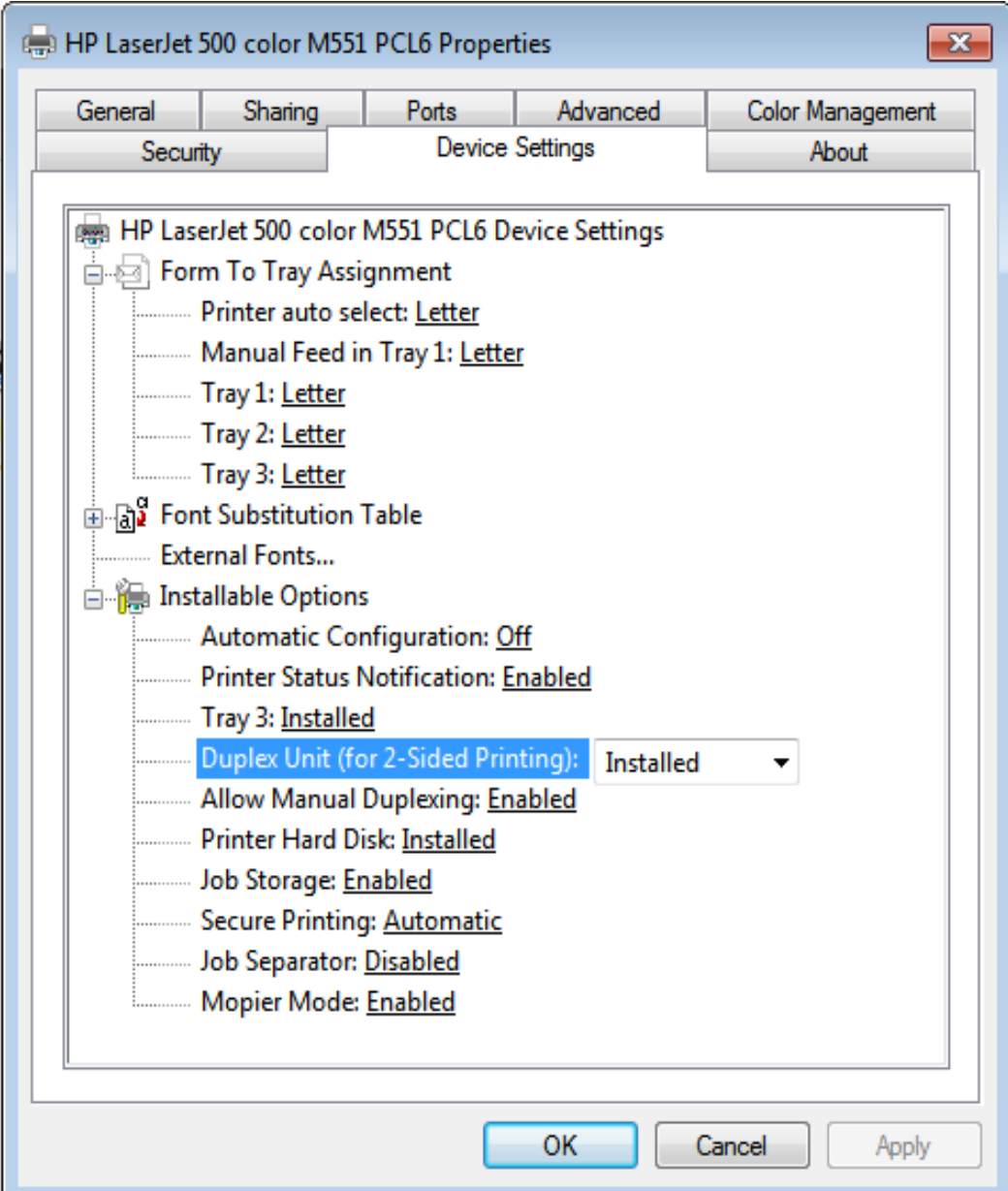
Click on the printer in **Devices and Printers** panel with right mouse button. Then click on **Printer properties**:



HP LaserJet 500
color M551 PCL6



Select the Device Settings tab, change setting to match with the picture and click on OK:

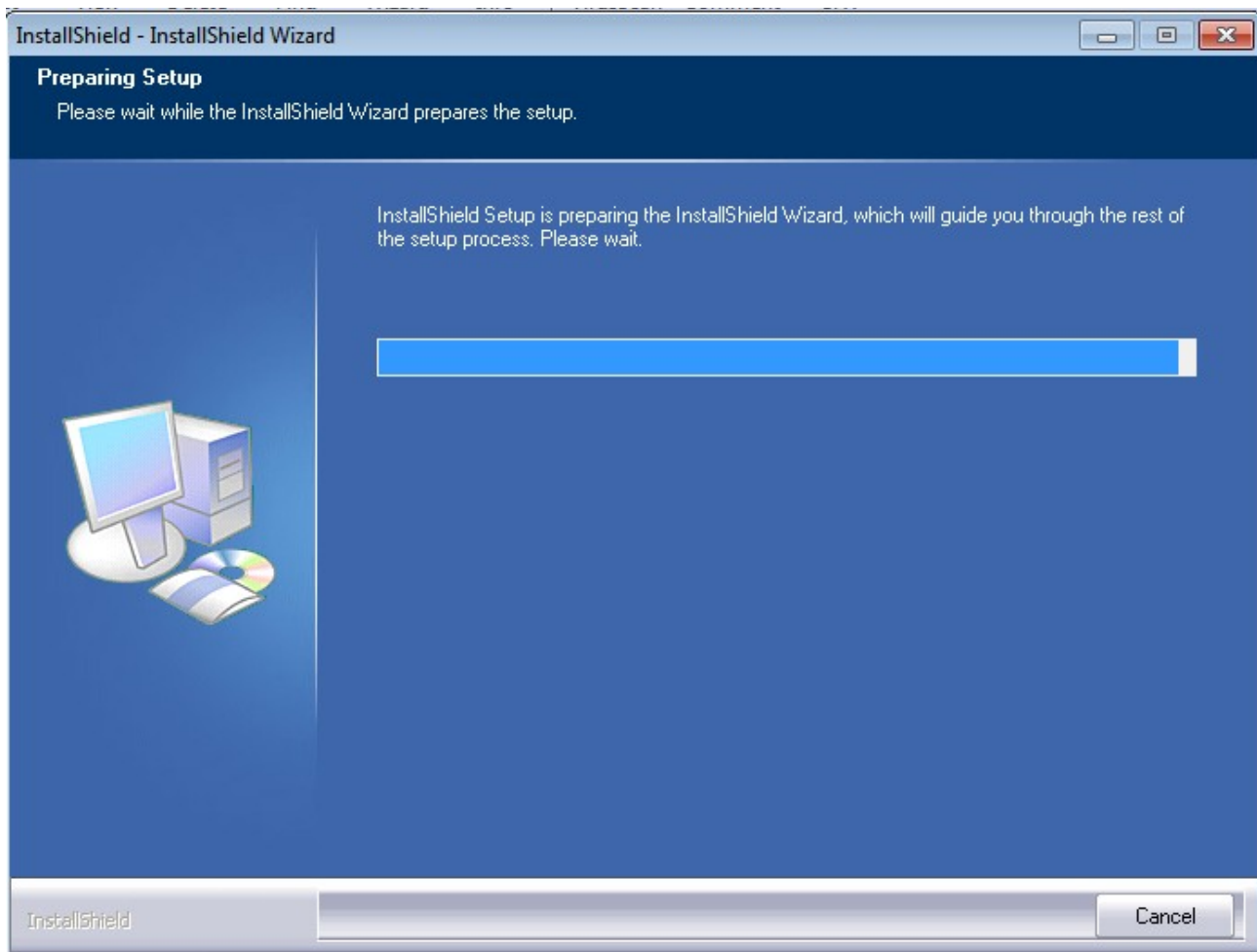


For Sharp MX-B201D drivers, Here is the link to download:

**[http://support.sharp.net.au/drivers/driversearch.asp?
prodgrp=COP&model=MXB201D](http://support.sharp.net.au/drivers/driversearch.asp?prodgrp=COP&model=MXB201D)**

Select the package SHB05_PCL6_PS_TWAIN_1305a

Extract zip archive and double click on setup



Choose Standard Installation Method

SHARP MX-B201 Series Printer Driver



Choose an installation method.

Standard installation

Automatically execute installation by searching for an MFP connected to the TCP/IP network.
(Network port is created with LPR automatically.)

Custom installation

Execute the installation by setting the connection method.

InstallShield

< Back

Next >

Cancel

Choose the Sharp MX-B201D printer of 2nd floor and 4th floor


SHARP MX-B201 Series Printer Driver

Select a MFP to install from the list.

Product name	Name	Name or IP addr...	MAC ad
SHARP MX-B201D	SHARP MX-B201D	172.16.10.43	00:02:32:
SHARP MX-B201D	Sharp MX-B201D_Fourth_Floor	172.16.10.42	00:02:32:

Specify condition... Re-search

InstallShield < Back Next > Cancel



Click Next.

Setup Status

SHARP MX-B201 Series Printer Driver is configuring your new software installation.



InstallShield

InstallShield

< Back

Next >

Cancel

Click ok

The installation of the SHARP software is complete.

After the installation, "Auto Configuration" is set by the following procedure.

1. Open the printer property window from the printer folder on the control panel.
2. Open the "Configuration" Tab and click the "Auto Configuration" button.

After the installation, a message to restart your computer may be displayed. In this case, click the "Yes" button to restart your computer.



With this, you have successfully added the network printer to your Windows.