

How to Install Dell's SSL VPN client – NetExtender – on Ubuntu

1. Install Sun Java JDK 1.8.x

```
sudo apt install python-software-properties
sudo add-apt-repository ppa:webupd8team/java
sudo apt update
sudo apt install oracle-java8-installer
```

2. Download NetExtender.Linux.x.x.yyy.x86_64.tgz

- go to <https://sslvpn.demo.sonicwall.com/cgi-bin/welcome>
- log in with “demo/password”
- click on NetExtender icon, this will download a tar.gz with the client, save it

3. Launch the Terminal and Run following commands

```
sudo ln -s /lib/x86_64-linux-gnu/libssl.so.1.0.0 /usr/lib/libssl.so.6
sudo ln -s /lib/x86_64-linux-gnu/libcrypto.so.1.0.0 /usr/lib/libcrypto.so.6
```

4. un-tar the client, make install script executable

```
tar -zxvf ~arunx/Downloads/NetExtender.Linux.8.5.793.x86_64.tgz -C /opt/
```

Output

```
netExtenderClient/
netExtenderClient/icons/
netExtenderClient/icons/nx128.xpm
netExtenderClient/icons/nx48.xpm
netExtenderClient/icons/nx16.xpm
netExtenderClient/icons/nx128.png
netExtenderClient/icons/nx16.png
netExtenderClient/icons/nx32.xpm
netExtenderClient/icons/nx32.png
netExtenderClient/icons/nx48.png
netExtenderClient/uninstallNetExtender
netExtenderClient/ca-bundle.crt
netExtenderClient/NetExtender.jar
netExtenderClient/nxMonitor
netExtenderClient/libNetExtenderEpc.so
netExtenderClient/netExtender.1
netExtenderClient/README
netExtenderClient/libNetExtender.so
netExtenderClient/sslvpn
netExtenderClient/netExtenderGui
netExtenderClient/install
netExtenderClient/netExtender
netExtenderClient/NetExtender.desktop
```

5.. Install NetExtender

```
cd /opt/netExtenderClient
```

```
./install
```

— Dell SonicWALL NetExtender 8.5.793 Installer —

Checking library dependencies...

Checking pppd...

Do you want non-root users to be able to run NetExtender?

If so, I can set pppd to run as root, but this could be considered a security risk.

Set pppd to run as root [y/N]? y

mode of '/usr/sbin/pppd' retained as 4754 (rwsr-xr-)

mode of '/usr/sbin/pppd' changed from 4754 (rwsr-xr-) to 4755 (rwsr-xr-x)

mode of '/etc/ppp' retained as 0755 (rwxr-xr-x)

mode of '/etc/ppp/peers' changed from 2750 (rwxr-s-) to 2754 (rwxr-sr-)

mode of '/etc/ppp/peers/provider' changed from 0640 (rw-r--r-) to 0644 (rw-r-r-)

mode of '/etc/ppp/peers' changed from 2754 (rwxr-sr-) to 2755 (rwxr-sr-x)

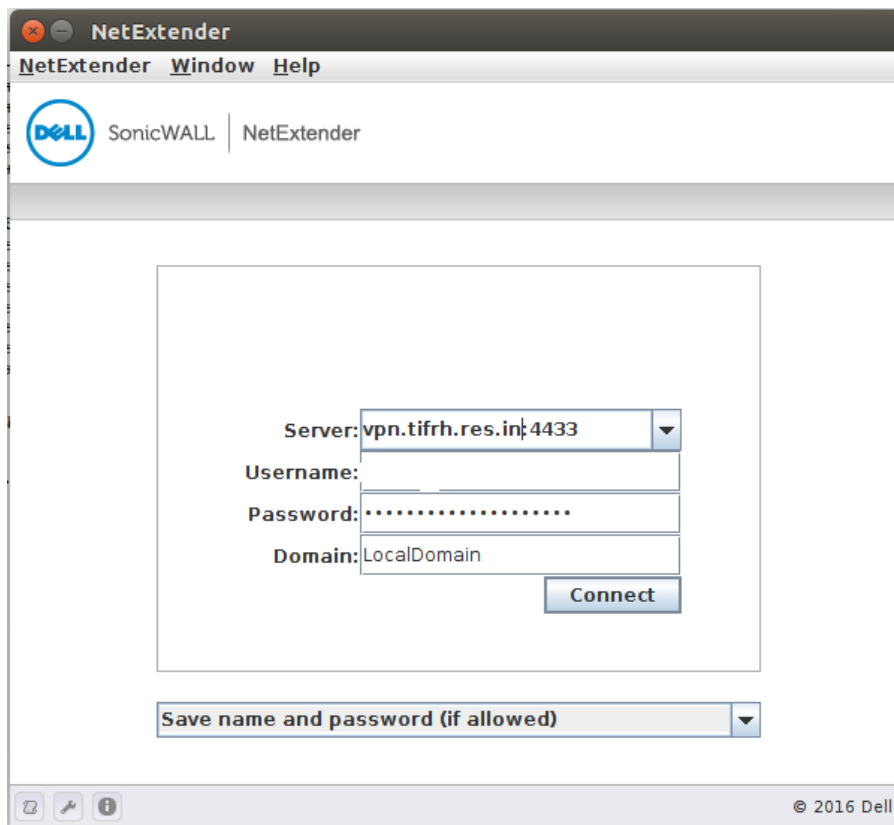
Copying files...

6. To launch NetExtender, do one of the following:

A. Click the NetExtender icon under the Applications menu
(look under the 'Internet' or 'Network' category)

or

B. Type 'netExtenderGui'



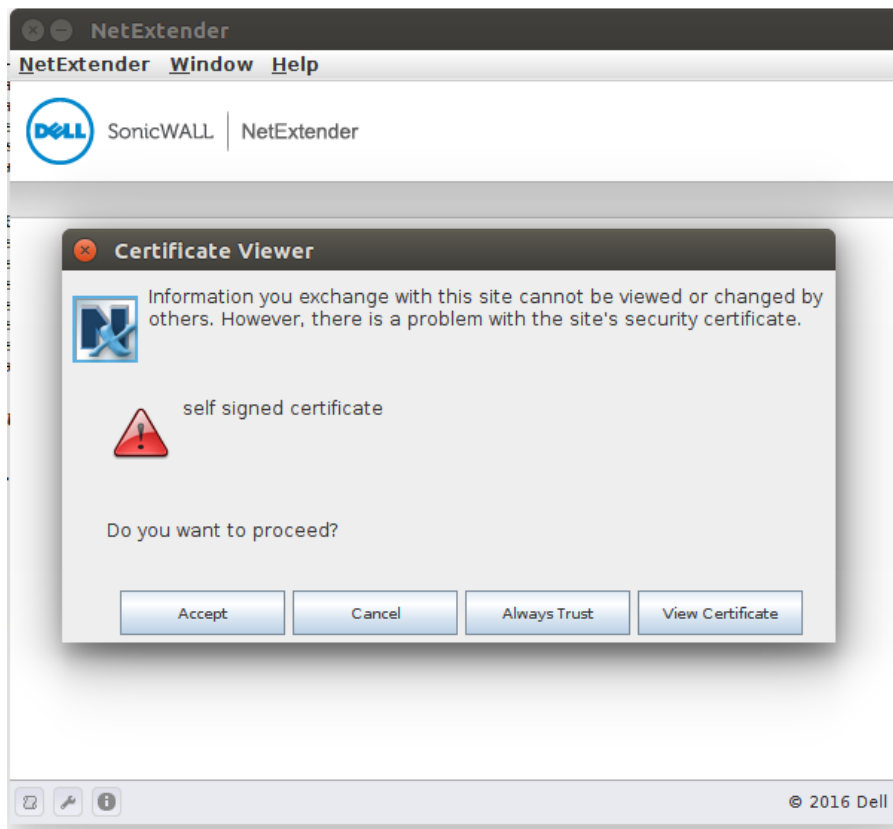
Server : **vpn.tifrh.res.in:4433**

Username : **Your Username**

Password : **Your Password**

Domain : **LocalDomain**

and Click on **connect**.



Click on "Accept"

